

**PRE-ORDER
FRESH**

CHICKEN SALE!!



Chicken by the case – 40 lb. cases
Sale Prices Good Through April 25, 2026
PICK UP ON FRIDAY & SATURDAY, MAY 1ST & 2ND

FRESH CHICKEN SALE!!

- Leg Quarters \$1.29 lb.....40 lb. case.....\$51.60 per case
- Drumsticks \$1.19 lb.....40 lb. case.....\$47.60 per case
- Thighs (Bone In) \$1.79 lb.....40 lb. case.....\$71.60 per case
- Thighs (Boneless Skinless) \$3.29 lb.....40 lb. case.....\$139.60 per case
- Boneless Skinless Chicken Breast \$2.99 lb.. 40 lb. case.....\$119.60 per case
- Whole Chicken (16 per case) \$2.39 lb.....Approx. 45 lb. case.....\$107.59 per case
- Chicken Halves (32 halves per case) \$2.49 lb.....Approx. 45 lb. case.....\$112.05 per case



DELI SPECIALS



4/14/26 - 4/25/26

- JFM Smoked Turkey.....\$7.99 lb.
- JFM Off-The-Bone Ham.....\$4.99 lb.
- JFM Baby Swiss Cheese.....\$4.99 lb.
- JFM Country Bacon
American Cheese.....\$4.49 lb.

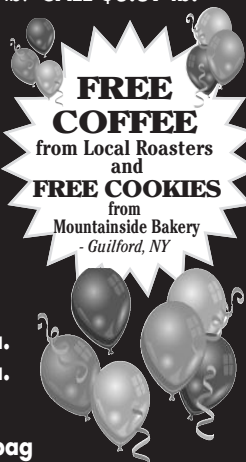
WEAVER'S FARM MARKET

7th Anniversary 2 DAY SUPER SALE!

Friday, April 24th & Saturday, April 25th, 2026

EXPERIENCE HUGE SAVINGS!

- JFM Salted Butter Quarters.....Reg. \$4.99 lb. **SALE \$2.89 lb.**
OR a 36 lb. case for.....\$89.00
- JFM Hickory Smoked Sliced Bacon 5 lb. pack.....Reg. \$5.99 lb. **SALE \$3.69 lb.**
- JFM Sliced White American Cheese - 3 lb. packs
 Reg.....\$12.99 pk. **SALE.....\$9 pack**
- King Arthur All Purpose White Flour
 50 lb. bag.....Reg. \$45 bag **SALE.....\$25 bag**
- Regular Rolled Oats - 50 lb. bag
 50 lb. bag.....Reg. \$55 bag **SALE.....\$35 bag**
- Locally Made Chicken and Beef Pot Pies
12 oz.Reg. \$8.99 ea. **SALE \$5.50 ea.**
24 oz.Reg. \$12.99 ea. **SALE \$9.00 ea.**
- Organic Cane Sugar
 50 lb. bag.....Reg. \$85 bag **SALE \$65.00 bag**



••• PLUS MANY MORE IN STORE SALES! •••

THIS IS A 2-DAY ONLY SALE FRIDAY & SATURDAY APRIL 24TH & 25TH

"Almost All Progress Takes Place Outside The Comfort Zone."

"Local" to Weaver's Farm Market is Otsego and adjoining Counties



1272 East Side Rd.,
MORRIS NY 13808
 607-263-2030

Hours: Tues., Wed. & Sat. 9 am - 5 pm
 Thurs. & Fri. 9 am - 6 pm
 Closed Sunday and Monday



WEAVER'S FARM MARKET